



**March 25th, 2020—Wednesday from 0730-1400**

Location: 3260 North 40th Street Mesa, AZ 85215

Fellow Aviators!

Mesa Police is proud to again partner with the FAA Safety Team for our 20th Annual Safety Fly-In and FAA Regional Helicopter Safety Seminar! This year, we will have several speakers. First we will hear from Jeff Hurd; FAASafety Team Rep and PHI Pilot. Jeff will be discussing “Solution Space: Recognizing indicators before they become problems”. This will include anatomy of an error (what to look for), helicopter cockpit performance planning, aerodynamic issues (ex. LTE), etc. illustrated with incidents. Next we will have Stan Rose from HSA. Stan will have a talk on “How to Crash a Helicopter”. Next Terry Palmer from HSA will discuss “Training in Small Operations”. Last we have Jay Heffernan who will talk about “1\* and Other Dirty Jobs”.

Fly in at 0730-0800 hours, Introductions will begin at 0815 hours. Speakers begin at 0830.

**Look forward to seeing everyone there!**



---

**REGISTER**

---

[WWW.FAASAFETY.GOV](http://WWW.FAASAFETY.GOV)

Seminar: WP0798993.

**Register Deadline: March 18**

Questions?? Contact:

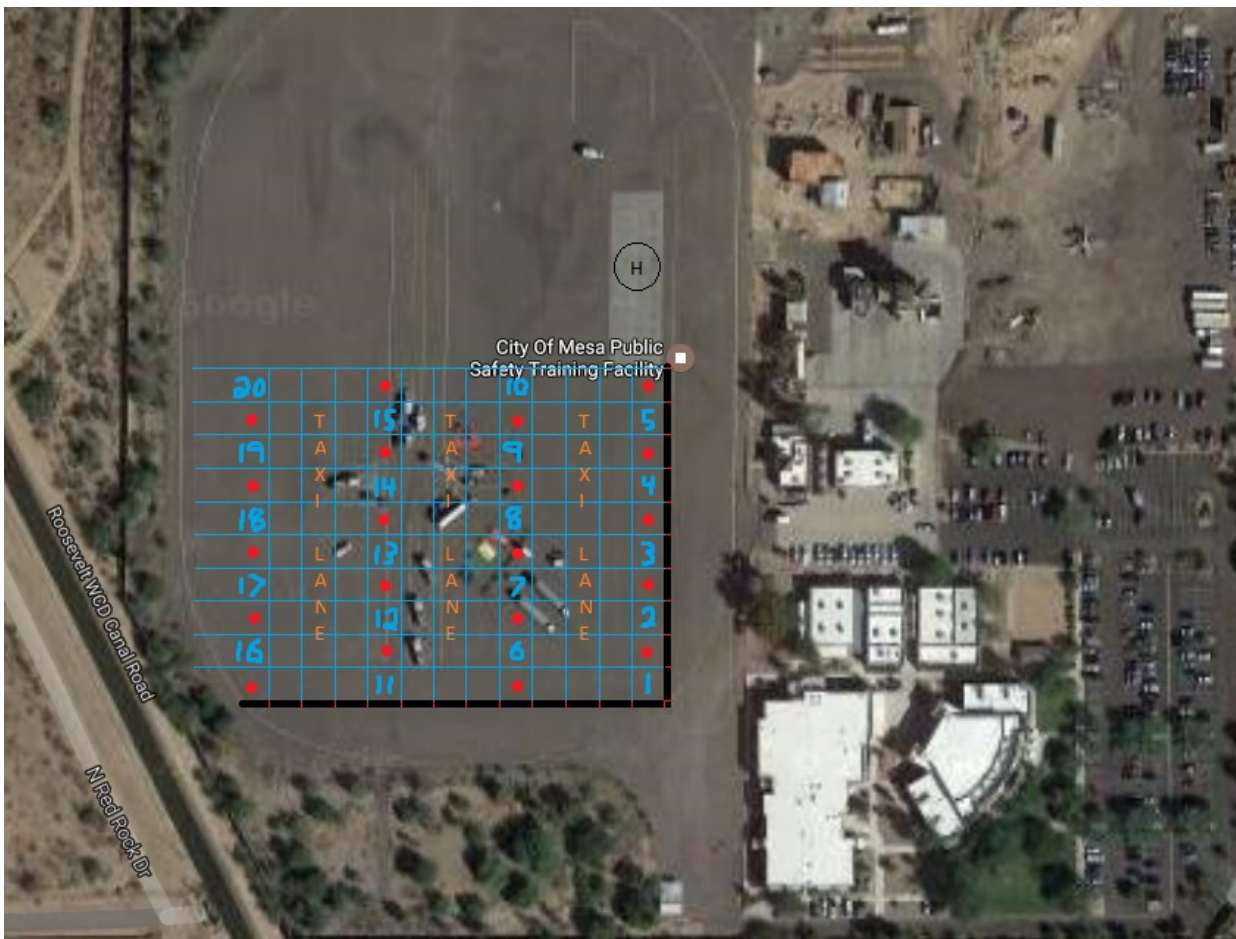
Joseph.johnston@mesaaz.gov

Tina.B.Bus Kirk@faa.gov

# 20th Annual Mesa Police Safety Fly-in

## Arrival – Landing – Parking Plan

1. Enter the Falcon Delta airspace from the north or north west
  - a. **Contact Falcon Tower on 119.7**
2. Advise landing at the Mesa Police training facility 1.5 miles northwest of the airport
3. All aircraft will approach to a landing on the concrete pad on the northeast corner of the asphalt-driving track.
  - a. If possible and winds allow, please fly a southbound final approach.
  - b. A large H will be marked on the concrete pad.
4. Advise Falcon tower “landing is assured”
5. **Contact Event Ground Control on 123.45**
6. Ground control will advise pilot of assigned parking spot. Spots are shown on attached map.
  - a. Spots will be filled starting at the southeast corner and working north and west.
  - b. 100 feet will be left between rows to allow for taxi if aircrews need to leave early.
  - c. Each spot is 35 feet by 35 feet, with an additional 35 feet between spots for rotor clearance.
  - d. Larger spots can be made available if required.
7. A ground marshal will escort aircraft and identify/confirm the assigned spot.
  - a. The ground marshal will be on a Golf Cart or similar and the driver will be wearing a traffic vest.



**Parking Spots # 4 and #5 are for the on call EMS helicopters: Native Air 01 and Evac 4.**

Spots 6-20 are available for parking for everyone else.

If you have any questions please call:

**Officer Joe Johnston – 480-644-3775 Cell-602-768-0662**